



NICOLAS (NICO) LEPAGE, DGC

PRODUCTION DESIGNER / ART DIRECTOR

www.kmreps.net

Representing creative talent to the entertainment industry

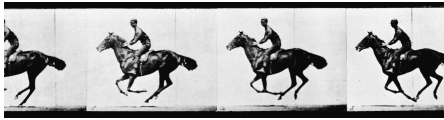
SELECTED CREDITS – PRODUCTION DESIGNER – FEATURE AND TV

THE NAUGHTY NINE	Disney Dir : Alberto Belli
SNOW	Cotton Bush Productions Kim Barr, Kathy Ann Thomas
GAME ON	YTV / Adlib – TV Series (21 episodes) Jacob Tierney
JONATHAN STRANGE AND MISTER NORRELL	Origin Pictures / Feel / Attraction / Adlib (BBC) – Mini Series Tobey Haynes (Collaboration with D Rogers)
CATEGORY 8	Muse Entertainment / Sonar – Mini Series Kevin Fair
ÉSIMÉSAC	Cité Amérique – Feature Luc Picard – Story by: Fred Pellerin
APPARENCES	Pixcom – TV Series (10 episodes) Francis Leclerc – Story by: Serge Boucher
CRIMSON PETAL AND THE WHITE	Origin Pictures / Cité Amérique – Mini-Series Marc Munden (Collaboration with G Montgomery)
PROJECT NATAL KINECT	Cirque du Soleil / Microsoft – Event Michel Laprise / Los Angeles
TANGLED	Shaftesbury – TV Feature Bronwen Hughes
BABINE	Cité Amérique – Feature Luc Picard – Story by: Fred Pellerin
MY AUNT ALINE	Cité Amérique – Feature Gabriel Pelletier
RED ROVER	Faulkner Films – Feature Marc S Grenier
LAST BEST CHANCE	Bread and Butter Films – Docu-Drama Ben Goddard
LES INVINCIBLES Jean-François Rivard	Casablanca / Radio Canada – TV Series (35 episodes)

KM REPS INC.

Tel: 416-462-2886 cell: 416 617 3406 e-mail: karin@kmreps.net

www.kmreps.net



NICOLAS (NICO) LEPAGE, DGC

PRODUCTION DESIGNER / ART DIRECTOR

www.kmreps.net

Representing creative talent to the entertainment industry

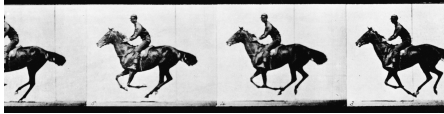
SELECTED CREDITS – SUPERVISING ART DIRECTOR / ART DIRECTOR – FEATURE AND TV

THE LAST OF US Supervising Art Dir	HBO Max Dir: Kantemir Balagov
HOME ALONE Supervising Art Dir	20 th Century Studios Dir: Dan Mazer
SEE Supervising Art Dir	Chernin Ent. / Apple TV Dir: Francis Lawrence
CHAOS WALKING Supervising Art Dir	Quadrant Pictures / Lionsgate Dir : Doug Liman
ZOE Supervising Art Dir	Dir: Drake Doremus, Production Designer: Katie Byron IM Global / Gem Entertainment
THE HANDMAID'S TALE - Series Art Director – 5 Eps.	MGM / HULU Various – Production Designer: Julie Berghoff
THE GLASS CASTLE Supervising Art Director	Lionsgate Films - Feature Destin Daniel Cretton – Production Designer : Sharon Seymour
ARRIVAL Supervising Art Director Additional Footage	21 Laps Ent. – Feature Denis Villeneuve – Production Designer: Patrice Vermette
MIRROR MIRROR	Relativity Media – Feature Tarsem Singh – Production Designer: Tom Foden
IMMORTALS	Relativity Media – Feature Tarsem Singh – Production Designer: Tom Foden
THE MUMMY 3: TOMB	Universal – Feature
OF THE DRAGON	Rob Cohen – Production Designer: Nigel Phelps
300 (FRANK MILLER)	Warner Brothers – Feature Zack Snyder – Production Designer: Jim Bissell
THE FOUNTAIN	Warner Bros / Regency – Feature Darren Aronofsky – Production Designer: James Chinlund
THE TERMINAL	Dreamworks SKG – Amblin – Feature Steven Spielberg – Production Designer: Alex McDowell
GOTHIKA	Dark Castle – Feature Mathieu Kassovitz – Production Designer: Grace Walker
CONFESSIONS OF A DANGEROUS MIND	Miramax – Feature George Clooney – Production Designer: Jim Bissel

KM REPS INC.

Tel: 416-462-2886 cell: 416 617 3406 e-mail: karin@kmreps.net

www.kmreps.net



NICOLAS (NICO) LEPAGE, DGC

PRODUCTION DESIGNER / ART DIRECTOR

www.kmreps.net

Representing creative talent to the entertainment industry

HEIST Warner – Feature
David Mamet – Production Designer: David Wasco

GODSEND – ADAM Lakeshore – Feature (Montreal Unit)
Nick Hamm – Production Designer: Doug Krane

SELECTED FEATURE CREDITS – 1ST ASS'T ART DIRECTOR

SUM OF ALL FEARS Paramount Pictures – Feature
Phil Alden Robinson – Production Designer: J Oppewall

LE SURVENANT Vision 4 Films – Feature
Eric Canuel – Production Designer: N Sarrazin

LADIES ROOM 1998 – Transfilm – Feature
Gabriella Cristiani – Production Designer: P Allard

COURAGE TO LOVE Allegro – Feature
Kari Skogland – Production Designer: P Gorrarra

SATAN'S SCHOOL FOR GIRLS Spelling Television – Feature TV
Christopher Leitch – Production Designer: P Gorrarra

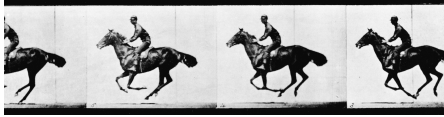
DOG'S WORLD Punch! International – Series (27 episodes)
Michel David, Jacques Laberge – Production Designer: Claude Tremblay

SELECTED FEATURE CREDITS – SET DECORATOR

C.R.A.Z.Y. Cirrus Communications – Feature
Jean-Marc Vallée – Production Designer: Patrice Bricault-Vermette

THE WITNESS Melleny Productions – Feature
Jeffrey Edwards – Production Designer: Camille Parent

ETERNAL REVENGE Allegro Films – Feature
Marc S Grenier – Production Designer: Pierre Riopel



NICOLAS (NICO) LEPAGE, DGC

PRODUCTION DESIGNER / ART DIRECTOR

www.kmreps.net

Representing creative talent to the entertainment industry

SELECTED ARCHITECTURE CREDITS

DESIGN & BUILD

RANDOM FIGURE DESIGN Co (Since 1996)

From concept to delivery. Portfolio available upon request.
Various projects in Canada (Montreal, Knowlton, St-Paul, Ottawa)
USA (Dallas, New York) & Mexico (Tequila City)

PAST EMPLOYERS

MELVIN CHARNEY (Artist & Architect) 1994-1995

UNIVERSITY OF MONTREAL (School of Architecture) 1993-1994
Teacher Asst – 2d & 3D drawings and models, Corrector (Theory of Architecture)
Urban Research Unit Studies and drawings of a living city

STUDIES

BACC in ARCHITECTURE – University of Montreal – 1994
Awarded the AMERICAN INSTITUTE OF ARCHITECTS Medal
for excellence in the study of architecture

LANGUAGES

ENGLISH & FRENCH (Written and Spoken)